

Quality Monitoring Tools

Introduction:

Sarva shiksha Abhiyan (SSA): flagship programme of Government of India which aims at providing quality elementary to all children in the age group of 6 to 14 years. The NCF, 2005 also emphasizes the need for improvement in the quality of education. In the context of elementary of education following quality dimensions have been indentified.

- Basic infrastructure and facilities.
- Management and community support.
- School and classroom enrollement.
- Curriculum and teaching learning materials.
- Teacher & Teacher preparation.
- Opportunity time (Teaching and learning Time)
- classroom practices and processes.
- Learners assessment and monitoring and supervision.

With a view to managing the quality of elementary education under Sarva shiksha Abhiyan, the MHRD through NCERT. put in place a massive programme of monitoring quality dimensions of elementary education throughout the country during 2005-06. The dept of elementary education, NCERT in consultation with TSG and MHRD, Government of India developed a set of Quality Monitoring Tools (QMT) which consisted of 14 formats and 3 analytical sheets. Different aspects of quality dimensions covered in these formats were,

1. Children's attendance
2. Community support and participation.
3. Teacher & teacher preparation.
4. Curriculum and teaching and learning materials
5. classroom process; and
6. Learner's assessment, Monitoring & Supervision.

Adequate, regard inclusive and continuous monitoring, supervision and feedback are the most important keys to successful implementation of any educational programme.

The field experience and relevant data here shown that there has been considerable. progress in access, enrollment and retention of children but quality issues still need to be addressed and monitored.

As per NCERT guidelines, QMT are revised. The consolidated progress is sent to NCERT half yearly. These formats throw light on attendance, community. Participation, classrooms transaction levels Viz; School, Cluster, blocks, district and state. The monitoring process involved assessing of progress, diagnosing strengths and weakness and taking of progress, remedial measures according to needs of teachers, schools and related educational functionaries. The objective was to help states/UTs to institutionalize quality monitoring system with self sustained feedback mechanism.

2012-13 QMT Progress Overview:-

Process of Development of Formats:

In order to address the quality issues more meaningfully, a committee was constituted under the chairmanship of Director, SSA where Senior Consultant, SSA was a member, along with other field functionaries. This committee decided to transform the open-ended QMT to a structured/ coded version, so that responses become specific, focused and clear. Based on the suggestions and recommendations the tools were refined and modified.

Series of meetings were held and the issues discussed extensively. Filling formats should not be a burden or does not account to heavy load, the formats were revised and modified in objective type. Each question was given a code with multiple choice, every selected answer had a code. In most of the items the observers have to answer by ticking or by mentioning the code. In some of the cases the observers need to mark/tick more than once for one item. (copy enclosed)

The frequency of filling up of this proforma is half yearly. As the states follow a different pattern in arranging an academic year, the information will be collected for two quarters in an academic year. The details are as follows:

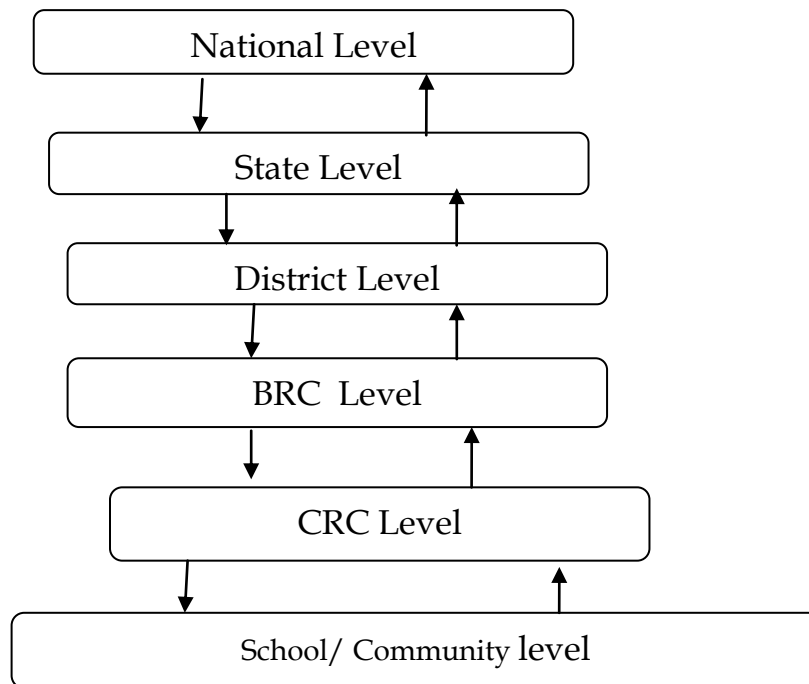
	Months covered	To be submitted in the month
I Quarter	June - September	November
II Quarter	November- March	May

Below the table shows divisional wise QMT workshops:

Sl No	Division	Place of Workshop	Date	No of Participant	Attended Officials
1	Gulbarga	Gulbarga	07-09-12		DIET Nodel Officers, Block BRCs, BRPs, CRPs.
2	Belguam	DIET-Dharwad	07-09-12		
3	Bangalore	DIET-Bangalore Rural	12-9-12		
4	Mysore	DIET-Mysore	10-9-12		

As, these formats are monitored at various levels from cluster to State, for systematic monitoring teleconference was organised on 15-09-12 for the field functionaries at various levels, in turn orientation was given in a cascade mode.

Monitoring and Feedback Mechanism



Quality Monitoring Mechanism

Quality is the main concern of any programme. SSA also having implemented different programmes like infrastructure development in schools, teacher empowerment, School level grants to make school attractive and class room transaction effective, It is necessary to monitor the efficacy of all these programmes by assessing the quality of learning of children. NCERT has developed a tool to monitor and assess the progress in quality with special reference to Equity. These tools will help the monitoring staff to understand the role of community in school management (SLF-1 and 2). The consolidation and planning for the further support will be done at 4 levels.

School level :

The school level format consists of attendance, community perceptions and learner assessment. This information is filled by the Head teacher, recorded half yearly and report to CRC. It should also be observed that if the same children are found to be absent the problem is discussed in the village level meetings. SLF-2 - validation by SDMC president is a special feature of the State. The major problem identified by the SDMC's are discussed in the monthly meetings and joint action will be taken for school improvement.

Cluster level :

The school level reports are consolidated by the immediate monitoring staff of the school Cluster resource person. The consolidated school reports and cluster analytical report are prepared. These reports are shared in the cluster level trainings and school visits. This has enabled the CRP and teachers to identify the social group wise and gender wise success stories and constraints.

The CRP and teachers join together discuss and plan the activities based on the requirements identified in the group like Training needs, Community mobilization, Examinations, Teaching learning materials. The Cluster level requirements are forwarded to block for the support from block level.

2012-13 progress to analyze the school level QMT data at the cluster level. The cluster resource person discuss the outcomes with all the head teachers and share the success stories and weak points. These sharing meetings every month will give feedback to school teachers and also to the CRP. The CRP in turn present the outcomes at the block level. CLF is educational implementation mirror of cluster level.

Block level:

The block level consolidation was prepared by Block resource coordinator. All the CRPs of the block presented their reports in the block level meeting. The issues raised by the CRPs are discussed at length in this meeting. The DIET representative and Block resource center prepared the block analytical report and the remedial measures to be taken to address the issues.

The BEO and BRC 2012-13 progress sharing meeting of all CRCs and analyses the luster level data. The success stories will be shared and constraints will be discussed to convert them in to success. The sharing meeting will give an idea to identify the hard spots, to plan for training, to plan for different programmes, to make class room transaction effective and plan the objectives for the next half year. During the year of 2012-13 under REMS activities block level analysis reports prepared BRCs. SSA state office provided analysis templates and released each block Rs. 5,000 regarding analysis work.

District Level:

In the divisional level meetings it is decided to prepare the district level data in the DIET with the help of DYPC and Block level functionaries. The Blocks have presented their analytical reports with the special issues identified at the block level. The DIET and District educational administration join together planned for the programmes to address the issues like Training needs, School needs, Teacher needs and activities to be organized. All the functionaries share the responsibilities.

The DIET and district office share the block level reports and analyses the quality in terms of quality monitoring tools. The block wise issues, weak areas, strengths and support required from the state. This future feed back to state to plan research, pedagogic activities.

As of now the quality is being monitored through different functionaries like DDPI office, DIET, BEO office, BRC, CRC and SDMC. The field functionaries visit schools and collect the data. The above officials in the form of inspection and supervision monitor both administrative and academic aspects in the school. The base for the quality review would be achievement in examinations, School academic plan and interaction with children.

The CRCs are the bottom level official agency monitors the school activities and quality offer support and suggestions to teachers for the improvement of quality. In case of additional support required they will contact BRC and DIET.

The resource persons of Block resource center and educational co-ordinators, BRC co-ordinator and Block education officers present indefinite visited 2012-13 review and monitor the progress. Once again the base would be available records in the school and interaction with children. The block level persons will provide support to teachers in improving the quality. In case they need any decisions and academic support from the high level they contact DIET.

Like this the officials from the state, district and block level will also visit and monitor the quality aspects. They will provide their support and also summon the concerned officials for their failure in their responsibilities and streamline the process.

During the year of 2012-13 SSA has released 20,000 Rs. regarding district wise analytical work. DIET Nodal officer taken support of Block Resource Person preparation of analysis. This year 30 DIETs done a excellence analysis report. Already completed first semester analysis report. Second Semester (November to March) all step of formats was distributed. DIET should be collect BLF format within Feb. After they were consolidated DLF format.

State level:

The district level 2012-13 reports will be analyzed at the state level which will be a base for state level plans like researches, Text book, training, TLM. etc. It is planned to conduct action researches at cluster and block level to sort the problems identified at the school level. This data will be shared in SDMC meetings, Gramapanchayat meetings at the school level, in Taluk panchayat at block level and in DIET and Zilla panchayat at district level. Based on the outcomes in these meetings activities will be planned.

Feedback from Quality Monitoring Tools:

Teleconference was conducted for DIET, BRC, CRC to orient them for effective monitoring the performance of the schools on 15-09-2012 as per RTE implications. The data collected by CRCs was analysed at the block level. All the CRCs of the block presented the situation at the block level with success stories and areas where they need support from block and district level.

The block level consolidations were analyzed at the district level by DIET and district project office. The district level and block level supervisory staff discussed at length the success and constraints and came out with the list of activities to be taken up. The DIETs and BRCs have planned to address the teachers of particular subject to identify the reasons for low achievement and to plan sharing workshops with schools did well and to plan the training programmes for the next semester.

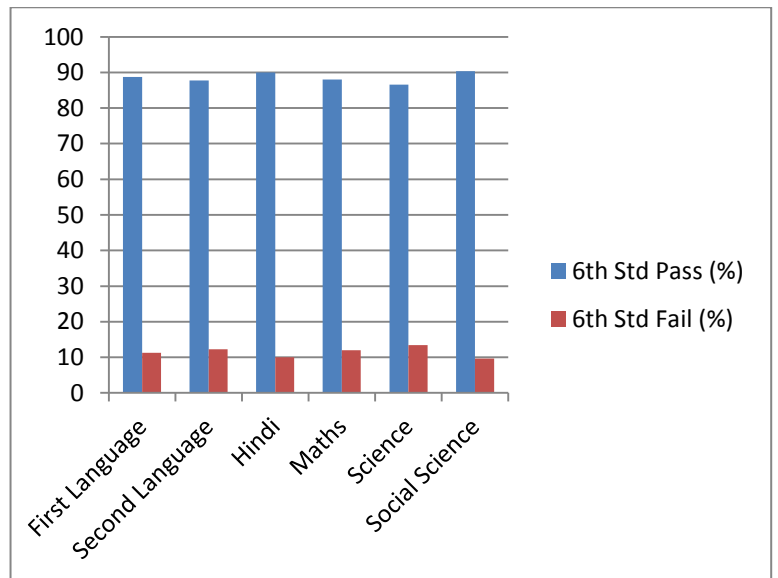
The district teams are of the opinion that from class 1 to 4 comprehensive continuous evaluation is in practice. The competency based evaluation programme is in practice. Hence for this semester they want to improve the achievement levels of class 5 and above.

In the district level this analysis will give a picture of the status of blocks and the areas where support is required from the district level. With this the district level consolidation has been done. The same was analysed and state level reports were prepared.

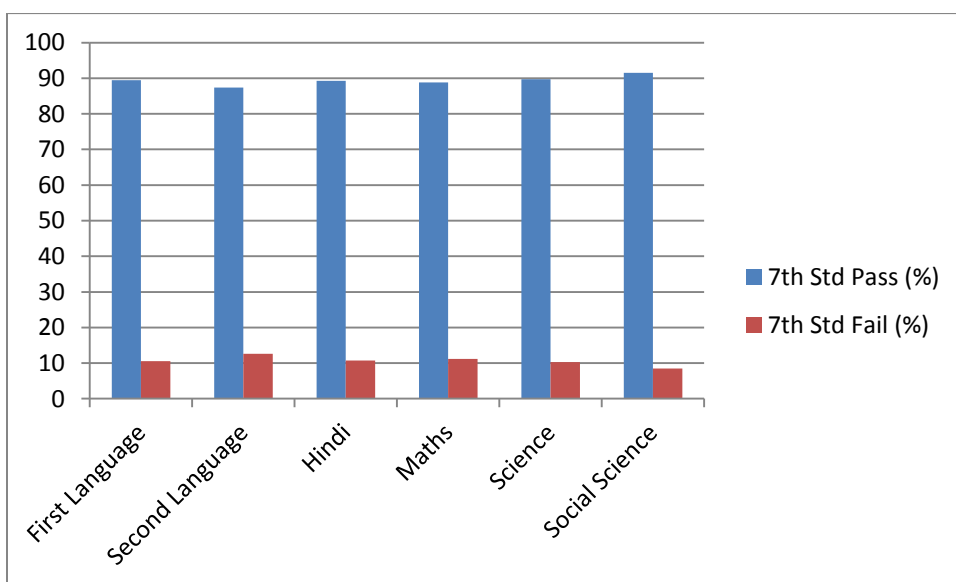
During the year 2012-13 primary school 6,7,8th standard passing student average:

Class		6th Std				Class		7th Std				Class		8th Std			
Subject	Pass	%	Fail	%	Subject	Pass	%	Fail	%	Subject	Pass	%	Fail	%			
First Language	475385	88.711	60493	11.289	First Language	473881	89.467	55788	10.533	First Language	163074	87.057	24244	12.943			
Second Language	476275	87.726	66637	12.27	Second	463829	87.372	67039	12.628	Second	156103	86.624	24104	13.376			
Hindi	460165	90.010	51071	9.990	Hindi	459348	89.304	55014	10.70	Hindi	159817	86.143	25709	13.857			
Maths	457818	88.005	62399	11.995	Maths	459777	88.818	57888	11.182	Maths	156834	84.987	27704	15.013			
Science	441675	86.573	68501	13.427	Science	446041	89.745	50968	10.255	Science	151309	87.545	21527	12.455			
Social Science	448030	90.362	47786	9.638	Social Science	450847	91.511	41825	8.489	Social Science	153729	88.377	20217	11.623			

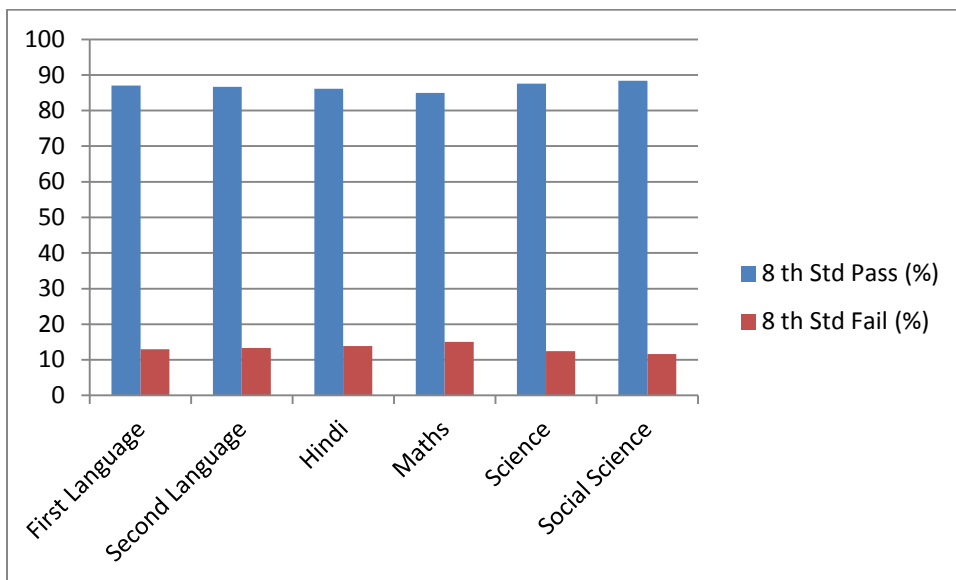
Class	6th Std	
Subject	Pass (%)	Fail (%)
First Language	88.711	11.289
Second Language	87.726	12.27
Hindi	90.01	9.99
Maths	88.005	11.995
Science	86.573	13.427
Social Science	90.362	9.638



Class	7th Std	
Subject	Pass (%)	Fail (%)
First Language	89.467	10.533
Second Language	87.372	12.628
Hindi	89.304	10.7
Maths	88.818	11.182
Science	89.745	10.255
Social Science	91.511	8.489



Class	8 th Std	
	Pass (%)	Fail (%)
First Language	87.057	12.943
Second Language	86.624	13.376
Hindi	86.143	13.857
Maths	84.987	15.013
Science	87.545	12.455
Social Science	88.377	11.623



Sl No	DISTRICT	Student Enrollment (As on 2012-13)																							
		1st std			2nd std			3rd std			4th std			5th std			6th std			7th std			8th std		
		Boys	Girls	Total	Boys	Girls	Total	Boys	Girls	Total	Boys	Girls	Total	Boys	Girls	Total	Boys	Girls	Total	Boys	Girls	Total	Boys	Girls	Total
1	BAGALKOT	13349	14684	28033	13654	13421	27075	12767	13070	25837	12389	13039	25428	13351	13867	27218	13345	13823	27168	12637	13063	25700	4230	4538	8768
2	BANGALORE RURAL	3507	3918	7425	3819	3821	7640	3661	3840	7501	3613	9256	12869	3905	4041	7946	4133	4237	8370	4558	4446	9004	1756	1897	3653
3	BANGALORE CITY	12474	12847	25321	11629	11806	23435	10754	11254	22008	10905	11334	22239	11156	11742	22898	11164	11834	22998	10887	11953	22840	4836	5381	10217
4	BELGAUM CHIKKODI	27317	30691	58008	28657	28467	57124	27507	28575	56082	28052	29203	57255	30700	31210	61910	30043	30593	60636	29975	30428	60403	10770	10908	21678
5	BELLARY	15187	16437	31624	15499	15734	31233	15516	15960	31476	14997	15825	30822	16023	16508	32531	15338	15433	30771	13887	13867	27754	7419	7383	14802
6	BIDAR	10859	12155	23014	10902	11622	22524	10361	11177	21538	10037	10809	20846	10236	11233	21469	9258	10600	19858	8858	9914	18772	3799	4326	8125
7	BIJAPUR	19419	19826	39245	19725	18565	38290	19618	18636	38254	19417	18327	37744	19960	18951	38911	18390	17653	36043	16682	15816	32498	6305	6712	13017
8	CHIKKABALLAPURA	14905	16510	31415	15775	16210	31985	15840	16314	32154	15102	16428	31530	26269	28076	54345	31185	32342	63527	33617	35507	69124	20386	23123	43509
9	CHAMARAJANAGARA	4320	4741	9061	4534	4447	8981	4563	4644	9207	4558	4748	9306	4820	4859	9679	4944	4832	9776	5175	5237	10412	2337	2451	4788
10	CHIKKAMANGALORE	4555	4798	9353	4114	4088	8202	4873	4149	9022	4922	4822	9744	5126	5191	10317	5576	5208	10784	19732	19024	38756	11727	10974	22701
11	CHITRADURGA	9971	10432	20403	9964	9465	19429	10098	9763	19861	10172	9896	20068	10428	10245	20673	10558	10345	20903	10381	10510	20891	5162	4875	10037
12	DAKSHINA KANNADA	5713	5703	11416	5875	5847	11722	6261	6073	12334	6624	6273	12897	6929	6795	13724	7216	7185	14401	7916	7596	15512	4330	4384	8714
13	DAVANAGERE	8648	10032	18680	8588	8700	17288	8800	9199	17999	8871	9265	18136	9451	9999	19450	9615	9985	19600	9521	9702	19223	2099	2371	4470
14	DHARWAD	8477	10074	18551	8278	8831	17109	8155	8751	16906	8347	9035	17382	9294	9834	19128	9540	9885	19425	9446	10154	19600	3537	4436	7973
15	GADAG	6615	7440	14055	6541	6236	12777	5932	6133	12065	6312	6098	12410	6906	7228	14134	6729	6731	13460	6472	6579	13051	2587	2884	5471
16	GULBARGA	17594	18624	36218	18417	18115	36532	18316	18329	36645	17218	17901	35119	18284	18037	36321	16476	16585	33061	15245	15535	30780	9008	9176	18184
17	HASSAN	6367	7052	13419	6509	6477	12986	7036	6804	13840	7013	7255	14268	7406	7572	14978	7613	7456	15069	8159	8087	16246	446	533	979
18	HAVERI	9707	10680	20387	9779	9561	19340	9596	10112	19708	9749	9883	19632	10531	10774	21305	10455	10402	20857	10307	10492	20799	4094	4442	8536
19	KODAGU	2000	2035	4035	1935	1927	3862	2074	2061	4135	2189	2225	4414	2363	2567	4930	2470	2310	4780	2541	2440	4981	917	848	1765
20	KOLAR	6869	7258	14127	6583	7183	13766	6518	6888	13406	6749	7265	14014	7514	8035	15549	7112	7762	14874	7613	8253	15866	5808	6219	12027
21	KOPPAL	10101	10401	20502	10743	10468	21211	13417	10799	24216	10605	10770	21375	11853	11904	23757	11455	10949	22404	10663	10302	20965	5650	5419	11069
22	MANDYA	5832	6794	12626	6126	5991	12117	6827	6922	13749	7404	7174	14578	7731	7229	14960	7527	7552	15079	8154	8001	16155	1708	1788	3496
23	MYSORE	9866	11255	21121	10587	10541	21128	11146	11542	22688	11293	11798	23091	11377	12092	23469	12340	12858	25198	13139	13376	26515	7869	8527	16396
24	RAICHUR	14591	15363	29954	14710	13681	28391	14976	14290	29266	14695	14252	28947	15202	15135	30337	14057	13099	27156	12828	11270	24098	4939	4387	9326
25	RAMANAGARA	5038	5345	10383	5106	4993	10099	5250	5209	10459	5522	5094	10616	5826	5661	11487	5507	5485	10992	5890	5725	11615	3035	2904	5939
26	SHIMOGA	7348	7867	15215	7487	7269	14756	7757	7841	15598	7904	8014	15918	8260	8406	16666	8748	8683	17431	9042	9027	18069	1936	2109	4045
27	TUMKUR MADHUGIRI	11488	12489	23977	12020	11722	23742	12338	12202	24540	12361	12459	24820	12592	12541	25133	13127	12939	26066	13832	13680	27512	2001	2142	4143
28	UDUPI	2885	2994	5879	2925	2842	5767	3125	3010	6135	3300	3128	6428	3529	3352	6881	3596	3411	7007	3997	3856	7853	742	728	1470
29	UTTARA KANNADA	3121	3156	6277	3251	3131	6382	3217	3147	6364	3443	3360	6803	3662	3503	7165	3967	3755	7722	4235	4087	8322	461	431	892
30	YADAGIRI	12136	11889	24025	11807	11041	22848	11826	10951	22777	11217	10636	21853	11505	10208	21713	9511	8218	17729	8132	6703	14835	2608	2064	4672
31	SIRSI	4591	4653	9244	4580	4280	8860	4694	4552	9246	4351	4335	8686	4775	4586	9361	4760	4638	9398	4701	4613	9314	1392	1457	2849
	TOTAL	294850	318143	612993	300119	296482	596601	302819	302197	605016	299331	309907	609238	326964	331381	658345	325755	326788	652543	338222	339243	677465	143894	149817	293711

Sl No	DISTRICT	Student Attendance (As on 2012-13)																							
		1st std			2nd std			3rd std			4th std			5th std			6th std			7th std			8th std		
		Boys	Girls	Total	Boys	Girls	Total	Boys	Girls	Total	Boys	Girls	Total	Boys	Girls	Total	Boys	Girls	Total	Boys	Girls	Total	Boys	Girls	Total
1	BAGALKOT	12953	14180	27133	13150	13013	26163	12471	12739	25210	13984	12760	26744	12964	13498	26462	12954	13465	26419	11887	12733	24620	4106	4204	8310
2	BANGALORE RURAL	3492	3902	7394	3806	3811	7617	3655	3832	7487	3599	3902	7501	3888	4026	7914	4122	4230	8352	4548	4463	9011	1755	1897	3652
3	BANGALORE CITY	11869	12239	24108	11054	11274	22328	10303	10918	21221	10484	10945	21429	10753	11444	22197	10851	11528	22379	10319	11566	21885	4702	4683	9385
4	BELGAUM CHIKKODI	26664	29948	56612	28035	27883	55918	26990	27824	54814	27394	28690	56084	30169	30651	60820	29251	29808	59059	29110	29688	58798	10404	10633	21037
5	BELLARY	14791	15816	30607	14883	14931	29814	14851	15263	30114	14330	15134	29464	15338	15567	30905	14582	14698	29280	13330	13117	26447	7165	6948	14113
6	BIDAR	10053	11271	21324	10189	10779	20968	9619	10450	20069	9291	10146	19437	9467	10558	20025	8646	9939	18585	8318	9272	17590	3552	4097	7649
7	BIJAPUR	15844	17515	33359	16459	16498	32957	16225	16390	32615	15931	15859	31790	16530	16592	33122	15595	15775	31370	14502	14501	29003	5099	5910	11009
8	CHIKKABALLAPURA	14905	16510	31415	15775	16210	31985	15840	16314	32154	15102	16428	31530	26269	28076	54345	31185	32342	63527	33617	35507	69124	20386	23123	43509
9	CHAMARAJANAGARA	4185	4610	8795	4404	4350	8754	4448	4563	9011	4440	4652	9092	4681	4746	9427	4749	4657	9406	5013	5003	10016	2157	2082	4239
10	CHIKKAMANGALORE	4555	4798	9353	4114	4088	8202	4873	4149	9022	4922	4822	9744	5126	5191	10317	5576	5208	10784	19732	19024	38756	11727	10974	22701
11	CHITRADURGA	9957	10388	20345	9920	9437	19357	10065	9764	19829	10149	9803	19952	10392	10167	20559	10555	10319	20874	10316	10458	20774	5120	4865	9985
12	DAKSHINA KANNADA	5525	5545	11070	5798	5668	11466	6103	5927	12030	6447	6153	12600	6757	6679	13436	7037	7060	14097	7755	7462	15217	4229	4269	8498
13	DAVANAGERE	8567	9945	18512	8524	8627	17151	8749	9137	17886	8805	9210	18015	9363	9878	19241	9514	9831	19345	9430	9655	19085	2057	2326	4383
14	DHARWAD	8213	9796	18009	8017	8598	16615	7941	8560	16501	8107	8709	16816	8968	9486	18454	9180	9415	18595	9105	9857	18962	3453	4248	7701
15	GADAG	6400	7144	13544	6189	6051	12240	5581	5778	11359	5948	5825	11773	6527	6818	13345	6429	6400	12829	6064	6166	12230	2423	2679	5102
16	GULBARGA	16762	17551	34313	17504	17029	34533	17280	17294	34574	16215	16908	33123	17189	17114	34303	15494	15656	31150	14206	14686	28892	8600	5707	17307
17	HASSAN	6327	7032	13359	6480	6362	12842	7013	6791	13804	6993	7241	14234	7381	7557	14938	7582	7429	15011	8139	8061	16200	443	532	975
18	HAVERI	9443	10440	19883	9488	9332	18820	9289	9853	19142	9463	9690	19153	9575	10219	19794	10168	10155	20323	9986	10262	20248	3977	4288	8265
19	KODAGU	1938	2006	3944	1884	1923	3807	2008	2023	4031	2154	2199	4353	2303	2331	4634	2441	2281	4722	2504	2402	4906	890	837	1727
20	KOLAR	6848	7239	14087	6578	7163	13741	6500	6871	13371	6738	7248	13986	7498	8029	15527	7102	7738	14840	7660	8245	15905	5799	6198	11997
21	KOPPAL	9888	7354	17242	10551	8446	18997	8003	8601	16604	10231	10506	20737	11364	11438	22802	10231	10506	20737	10368	9940	20308	5520	5236	10756
22	MANDYA	5782	6749	12531	6076	5963	12039	6788	6895	13683	7368	7133	14501	7380	7211	14591	7486	7524	15010	8097	7975	16072	1679	1770	3449
23	MYSORE	9608	11065	20673	10492	10408	20900	11016	11324	22340	11231	11707	22938	11265	11923	23188	12182	12656	24838	12840	13201	26041	7695	8373	16068
24	RAICHUR	13860	14283	28143	13975	12852	26827	14079	13994	28073	13874	13353	27227	14922	14122	29044	13233	12348	25581	12079	10741	22820	4673	4172	8845
25	RAMANAGARA	5024	5317	10341	5099	4980	10079	5243	5204	10447	5525	5057	10582	5810	5641	11451	5486	5465	10951	5879	5716	11595	3245	2902	6147
26	SHIMOGA	7328	7853	15181	7462	7256	14718	7741	7832	15573	7891	8001	15892	8249	8397	16646	8736	8671	17407	9031	9021	18052	1927	2101	4028
27	TUMKUR MADHUGIRI	11448	12454	23902	11985	11685	23670	12290	12170	24460	12302	12415	24717	12538	12481	25019	13094	12903	25997	13782	13606	27388	1985	2123	4108
28	UDUPI	2885	2994	5879	2925	2842	5767	3125	3010	6135	3300	3128	6428	3529	3352	6881	3596	3411	7007	3997	3856	7853	742	728	1470
29	UTTARA KANNADA	3108	3137	6245	3239	3130	6369	3194	3137	6331	3436	3353	6789	3639	3486	7125	3957	3746	7703	4217	4074	8291	454	422	876
30	YADAGIRI	11422	11182	22604	10947	10282	21229	10996	10187	21183	10448	9858	20306	10825	9535	20360	8766	7710	16476	7607	6329	13936	2341	1833	4174
31	SIRSI	4527	4549	9076	4513	4159	8672	4615	4443	9058	4278	4219	8497	4706	4395	9101	4593	4435	9028	4571	4424	8995	1339	1406	2745
	TOTAL	284171	304812	588983	289515	285030	574545	286894	291237	578131	290380	295054	585434	315365	320608	635973	314373	317309	631682	328009	331011	659020	139644	141566	281210

