

Educational Profile of Karnataka :

As of March 2013, Karnataka had 60036 elementary schools with 313008 teachers and 8.39 million students, and 14195 secondary schools with 114350 teachers and 2.09 million students. <http://en.wikipedia.org/wiki/Karnataka> - cite_note-school-99 There are three kinds of schools in the state, viz., government-run, private aided (financial aid is provided by the government) and private unaided (no financial aid is provided). The primary languages of instruction in most schools are Kannada apart from English, Urdu and Other languages. The syllabus taught in the schools is by and large the state syllabus (SSLC) defined by the Department of Public Instruction of the Government of Karnataka, and the CBSE, ICSE in case of certain private unaided and KV schools. In order to provide supplementary nutrition and maximize attendance in schools, the Karnataka Government has launched a mid-day meal scheme in government and aided schools in which free lunch is provided to the students. A pair of uniforms and all text books is given to children; free bicycles are given to 8th standard children. Statewide board examinations are conducted at the end of the period of X standard and students who qualify are allowed to pursue a two-year pre-university course; after which students become eligible to pursue under-graduate degrees. There are two separate Boards of Examination for class X and class XII.

There are 652 degree colleges (March 2011) affiliated with one of the universities in the state, viz. Bangalore University, Gulbarga University, Karnataka University, Kuvempu University, Mangalore University and University of Mysore. In 1998, the engineering colleges in the state were brought under the newly-formed Visvesvaraya Technological University headquartered at Belgaum, whereas the medical colleges are run under the jurisdiction of the Rajiv Gandhi University of Health Sciences. Some of these baccalaureate colleges are accredited with the status of a deemed university. There are 187 engineering, 289 Polytechnic, 39 medical and 44 dental colleges in the state. Udupi, Sringeri, Gokarna and Melkote are well-known places of Sanskrit and Vedic learning. There is a women's university as well as a kannada University in the state, apart from 3 agricultural universities. A veterinary university has been set up during 2009-10.

30 Revenue Districts of the State are recomposed in 34 educational districts. The thirty districts of the state are grouped into four Educational Divisions with headquarters at Bangalore, Belgaum, Gulbarga and Mysore. Besides two divisions – Belgaum and Gulbarga divisions are having Additional Commissionerates for streamlining of administration.

Division	Districts
Bangalore	Bangalore, Bangalore (R), Ramanagar, Chitradurga, Kolar, Chikkaballapur, Shimoga, Tumkur and Davanagere. [09]
Belgaum	Belgaum, Bijapur, Bangalkot, Dharwad, Gadag, Haveri, and Uttara Kannada [07]
Gulbarga	Bellary, Bidar, Gulbarga, Raichur and Koppal, Yadgir [06]
Mysore	Chikmagalur, Dakshina Kannada, Udipi, Hassan, Kodagu, Mandya, Mysore and Chamarajanagar [08]

Administrative Divisions

Sl. No.	Name of District	No. of Educational Block	No. of CD Blocks	Municipal Corporation/Urban blocks	No. of revenue Villages/Wards	No. of Habitations	No. of Panchayats	No. of SMDC formed	No. of members in each SMDC
1	BAGALKOT	6	6	1	623	1340	191	157	1570
2	BANGALORE RURAL	4	4	0	1298	1298	98	63	630
3	BANGALORE URBAN	9	3	0	693	990	210	134	1340
4	BELGAUM	14	10	2	1495	1942	553	284	2840
5	BELLARY	8	7	2	543	1034	189	161	1610
6	BIDAR	5	5	1	717	960	176	156	1560
7	BIJAPUR	7	5	1	823	1614	199	137	1370
8	CHAMARAJANAGARA	5	4	1	464	1031	121	82	820
9	CHIKKABALLAPURA	6	6	0	1102	2045	164	107	1070
10	CHIKKAMANGALORE	8	7	1	861	4514	232	116	1160
11	CHITRADURGA	6	6	1	1358	1799	189	111	1110
12	DAKSHINA KANNADA	7	5	1	379	1734	214	161	1610
13	DAVANAGERE	7	6	2	2117	1288	230	155	1550
14	DHARWAD	7	4	1	407	542	135	101	1010
15	GADAG	6	5	1	4232	564	106	108	1080
16	GULBARGA	8	7	1	1360	1889	385	265	2650
17	HASSAN	8	8	1	393	3470	288	240	2400
18	HAVERI	7	7	1	1747	988	209	136	1360
19	KODAGU	3	3	0	1149	721	105	47	470
20	KOLAR	6	5	3	1392	2783	168	119	1190
21	KOPPAL	4	4	1	1324	789	137	143	1430
22	MANDYA	8	7	1	1395	2351	246	213	2130
23	MYSORE	9	7	1	5284	2032	235	223	2230
24	RAICHUR	5	5	2	636	1434	164	181	1810
25	RAMANAGARA	4	4	3	2137	2305	138	105	1050
26	SHIMOGA	7	7	3	5284	5284	260	163	1630
27	TUMKUR	10	10	1	2537	4417	321	227	2270
28	UDUPI	5	3	1	255	2406	145	106	1060
29	UTTARA KANNADA	11	12	3	1149	6186	219	122	1220
30	YADAGIRI	3	3	0	676	1134	129	119	1190
	TOTAL	203	175	37	43830	60884	6156	4,442	44420

Schools

- Elementary Education is provided in the State, viz, LPS with 1 to 5 standards, HPS with 1 to 7 standards and 1 to 8 standards, which also have 1 to 5 LPS attached to them. At the HPS stage, there are schools offering 6 and 7 standards as well as 6 to 8 standards only. In addition, 8th standard facility is provided to children in the high schools of the State for **all children** who complete the HPS in 1 to 7 and 6 to 7 standards.
- There is a separate State Based for 1 to 10 schools. There are 60036 schools with State Board. 25950 Government sector schools provide elementary schooling at 1 to 5 LPS stage only, and 34086 Government sector schools are at the HPS stage, which include LPS sections.

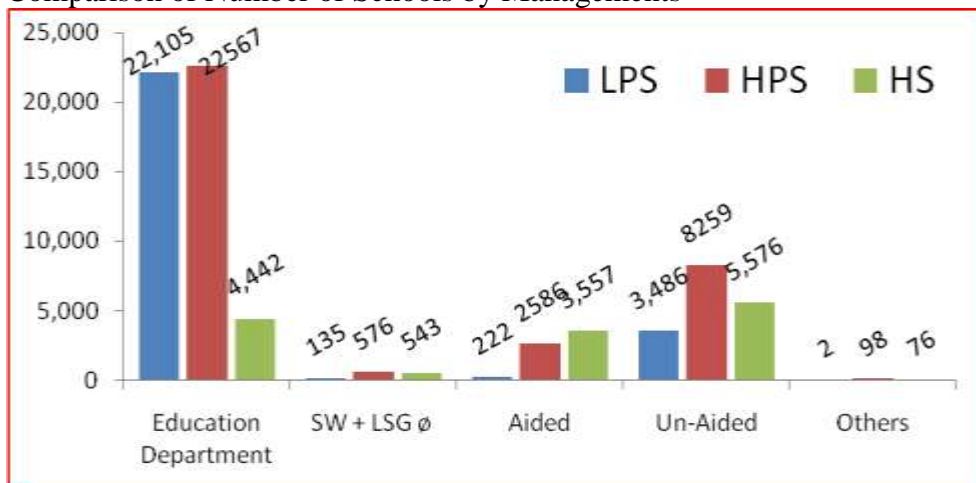
- When a count is taken of schools managed by the Department of Education (including those which are begun under SSA patronage), the schools of the Department of Social Welfare, schools run by Local Self Government Institutions, schools under government patronage for grant-in-aid (the private aided schools) which are all government and government aided schools. (Leaving out KGBV and CWSN schools), it is observed that there is a decrease/increase of 393 schools in the State. The increase in the private unaided sector is 972 schools. The decrease in State sector schools from 2011-12 to 2012-13 is around 0.69 percent while the increase is 6.27 percent in case of private unaided schools. [Source: State Analytical Report 2011-12 of U-DISE data and U-DISE data of 2012-13].

Management wise Schools, 2012-13

Category	Education Department	Social Welfare	Local Body	Aided	Unaided	Central Schools	Other Schools	Total
Primary Schools	22105	132	3	222	3486	2	0	25950
Upper Primary Schools	22567	553	23	2586	8259	78	20	34086
Elementary schools	44672	685	26	2808	11745	80	20	60036
High Schools	4442	500	43	3557	5576	71	5	14195
Total schools	49114	1185	69	6365	17321	151	25	74231

Graph 1

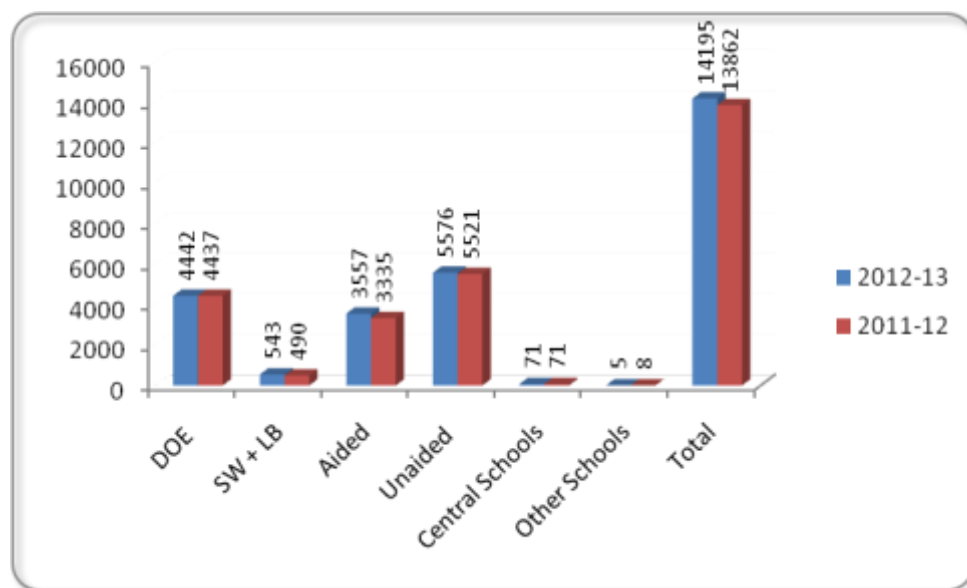
- Comparison of Number of Schools by Managements



- There are 60036 elementary schools in the State under diverse managements. 44672 schools, 72.32 percent, out of them are either managed or supported by government. 37170 schools, 62.41 percent are exclusively and directly managed by the government. Participation of the private unaided sector is higher at the higher primary stage within the elementary cycle.
- There is a net increase of 499 elementary schools (DoE) in the State during 2012-13 as compared to the figure of 2011-12. While 130 LPS of 2010-11 were upgraded (State-sector), there is a gross increase of 302 UPS from the previous year of which 130 are in upgraded category. The real increase of HPS is 172 schools.

- Location of LPS and HPS in the villages/urban areas is under diverse organizational structures. There are independent LPS schools in small habitations. LPS are also functioning and attached with HPS and high schools. This is true of HPS schools are also. Aided / Un-aided Madarasa are not counted among schools.

Year	□ <i>Highlights of schools 2012-13 Vs 2011-12</i>						
	DOE	SW + LB	Aided	Unaided	Central Schools	Other Schools	Total
2012-13	4442	543	3557	5576	71	5	14195
2011-12	4437	490	3335	5521	71	8	13862
+ or -	5	53	222	55	0	-3	333



✦ Notes :-

- Significant Increase in Aided schools at HS stage.
- There is an increase of 333 schools in the State. This increase is accounted by growth of private unaided schools (+55) and Aided schools (+22).

1.4.5 Structure and Administration of Secondary Education

School is the fundamental and a foundational unit of an educational system. Number of schools is indicative of the size of a system. There are 70748 schools in the State of which 26254 are lower primary, 32041 are higher primary and 12504 are high schools. The ratio between lower and higher primary schools is 1 : 1.22 ; like-wise, the ratio between higher primary and high schools is 2.57 : 1.

Schools of the State are run by 17 types of Managements. Some of the prominent types are mentioned here.

- Department of Education
- Department of Social Welfare

- Local Self – Government Institutions
- Private Aided
- Private Un-Aided
- Others [Jawahar Navodaya, Central, Sainik, NRI, Madarasas, Arabic, etc; are included here].
- Schools run by the Department of Education, Department of Social Welfare and by the Local Self Government Institutions are classified as Government Schools.

The enrolment among the SC and ST population is almost equal to the State average and shows a healthy trend. However, the gradual decrease in the numbers is a cause for concern.

DISTRICT – WISE SCHOOLS

District	Education Department	Social Welfare	Local Body	Aided	Un Aided	Central	Others	Total
BANGALORE RURAL	62	4	0	39	104	1	0	210
BANGALORE U NORTH	54	3	14	148	697	7	2	925
BANGALORE U SOUTH	80	4	17	152	944	3	0	1200
CHIKKABALLAPURA	107	13	0	37	112	1	0	270
CHITRADURGA	111	19	0	190	97	1	0	418
DAVANAGERE	156	19	0	178	142	1	0	496
KOLAR	120	15	0	55	131	2	0	323
RAMANAGARA	105	19	0	71	82	0	0	277
SHIMOGA	163	16	0	139	137	1	0	456
TUMKUR	133	14	0	200	132	2	0	481
TUMKUR MADHUGIRI	94	14	0	98	59	0	0	265
BANGALORE Division Total	1185	140	31	1307	2637	19	2	5321
BAGALKOT	157	17	0	118	104	2	1	399
BELGAUM	126	10	2	189	111	5	0	443
BELGAUM CHIKKODI	158	19	1	155	172	1	0	506
BIJAPUR	137	16	0	195	135	3	0	486
DHARWAD	101	11	4	125	141	4	0	386
GADAG	108	10	2	89	72	1	0	282
HAVERI	136	18	2	148	84	1	0	389
UTTARA KANNADA	49	4	0	87	43	2	0	185
UTTARA KANNADA SIRSI	73	8	0	59	30	2	0	172
BELGAUM Division Total	1045	113	11	1165	892	21	1	3248
BELLARY	161	25	0	87	195	4	1	473
BIDAR	156	13	0	115	192	2	0	478
GULBARGA	263	28	0	98	305	2	0	696
KOPPAL	143	16	0	26	78	3	0	266
RAICHUR	181	21	0	33	152	2	0	389
YADAGIRI	119	16	0	15	50	0	0	200
GULBARGA Division Total	1023	119	0	374	972	13	1	2502

CHAMARAJANAGARA	82	13	0	41	66	2	0	204
-----------------	----	----	---	----	----	---	---	-----

CHIKKAMANGALORE	116	20	0	115	75	2	0	328
DAKSHINA KANNADA	161	10	0	117	225	3	0	516
HASSAN	240	26	0	127	139	2	0	534
KODAGU	47	6	0	50	66	3	1	173
MANDYA	213	23	0	69	132	1	0	438
MYSORE	224	25	1	122	272	4	0	648
UDUPI	106	5	0	70	100	1	0	282
MYSORE Division Total	1189	128	1	711	1075	18	1	3123
State Total	4442	500	43	3557	5576	71	5	14194

Size of Enrolments:-

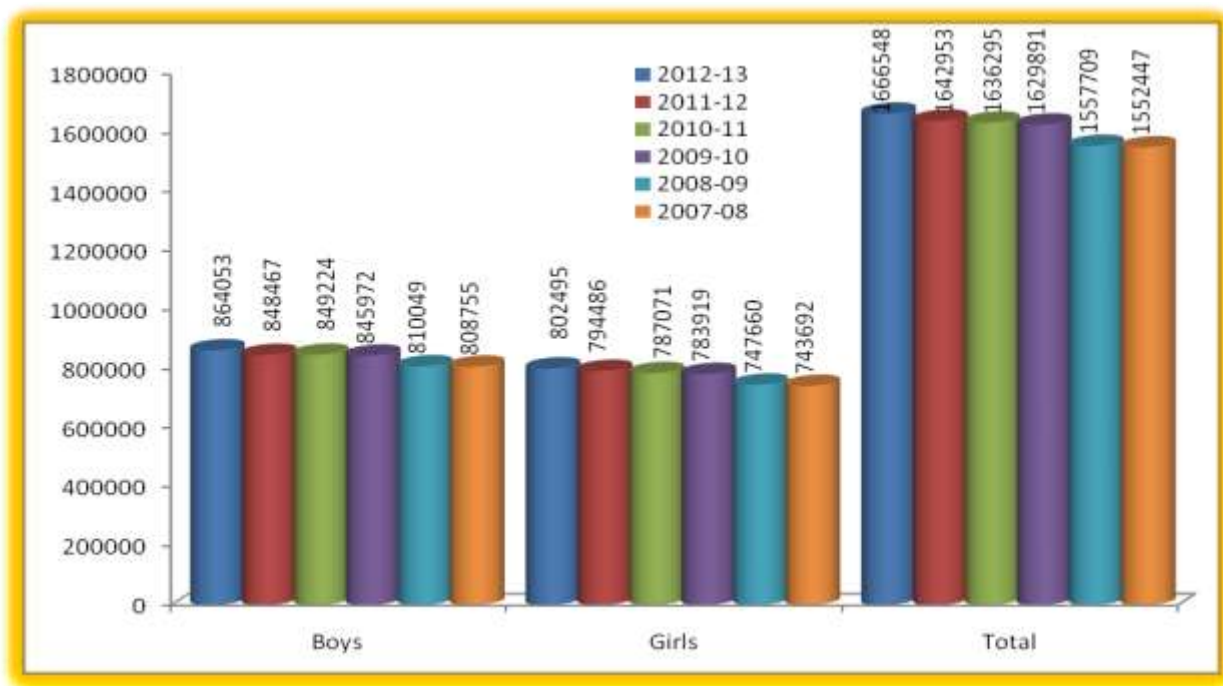
There are 1666548 children in 9th & 10th standards studying in 14195 schools of the State under all managements. There are 864053 boys as compared to 802495 girls in these 16.65 million children. Proportion of boys to girls is 51.90 to 48.10 percent. It cannot be 50:50 as there is an imbalance in sex-ratios everywhere. In Karnataka, it is 940; that is 940 women for every 1000 men.

Proportion of children in the schools funded by the Department of Education to total enrolments is 41 percent. Further it is to be noted that outside the Department of Education, in the State sector, there is enrolment in schools of the Department of Social Welfare, the Local Self Government, Institutions and the KGBV schools.

3.4. Enrolment

With the increase in GER and TR from Standard VIII to Standard IX and with effect implementation of new interventions by RMSA, the State has reached out to nearly all children of secondary school age. Sex ratio in Secondary School Enrolment is also quite conducive.

Sl.No	Year	Enrolment (Secondary)			% Increase/decrease		
		Boys	Girls	Total	Boys	Girls	Total
1	2012-13	864053	802495	1666548	1.84	1.01	1.44
2	2011-12	848467	794486	1642953	-0.09	0.94	0.41
3	2010-11	849224	787071	1636295	0.38	0.4	0.39
4	2009-10	845972	783919	1629891	4.43	4.85	4.63
5	2008-09	810049	747660	1557709	0.16	0.53	0.34
6	2007-08	808755	743692	155244			



The enrolment among the SC and ST population is almost equal to the State average and shows a healthy trend. However, the gradual decrease in the numbers is a cause for concern.

Table -3.5

District wise Enrolment in Class 9 &10 standard

Enrolment in Class 9 &10 standard									
District Name	SC			ST			Total		
	Boys	Girls	Total	Boys	Girls	Total	Boys	Girls	Total
BAGALKOT	8,897	6,792	15,689	2,589	1,974	4,563	11,486	8,766	20,252
BANGALORE RURAL	6,407	5,905	12,312	1,957	1,545	3,502	8,364	7,450	15,814
BANGALORE URBAN	40,157	39,386	79,543	5,419	6,493	11,912	45,576	45,879	91,455
BELGAUM	17,603	14,946	32,549	8,651	6,471	15,122	26,254	21,417	47,671
BELLARY	12,264	8,847	21,111	11,157	8,304	19,461	23,421	17,151	40,572
BIDAR	12,201	10,937	23,138	6,900	6,643	13,543	19,101	17,580	36,681
BIJAPUR	13,965	9,872	23,837	1,357	883	2,240	15,322	10,755	26,077
CHAMARAJANAGARA	7,263	7,090	14,353	2,666	2,506	5,172	9,929	9,596	19,525
CHIKKABALLAPURA	9,270	8,960	18,230	4,968	4,516	9,484	14,238	13,476	27,714
CHIKKAMANGALORE	7,568	7,708	15,276	1,510	1,609	3,119	9,078	9,317	18,395
CHITRADURGA	12,415	11,300	23,715	8,949	8,389	17,338	21,364	19,689	41,053
DAKSHINA KANNADA	4,430	4,946	9,376	2,511	2,522	5,033	6,941	7,468	14,409
DAVANAGERE	11,186	10,063	21,249	6,753	6,710	13,463	17,939	16,773	34,712
DHARWAD	5,926	5,100	11,026	2,676	2,534	5,210	8,602	7,634	16,236

GADAG	4,457	3,483	7,940	1,942	1,771	3,713	6,399	5,254	11,653
GULBARGA	17,835	13,570	31,405	1,407	1,027	2,434	19,242	14,597	33,839
HASSAN	11,119	10,863	21,982	927	914	1,841	12,046	11,777	23,823
HAVERI	5,699	5,063	10,762	3,865	3,991	7,856	9,564	9,054	18,618
KODAGU	2,407	2,601	5,008	1,040	1,102	2,142	3,447	3,703	7,150
KOLAR	14,627	13,833	28,460	2,642	2,410	5,052	17,269	16,243	33,512
KOPPAL	5,710	4,193	9,903	4,151	3,509	7,660	9,861	7,702	17,563
MANDYA	7,512	7,420	14,932	830	636	1,466	8,342	8,056	16,398
MYSORE	15,970	16,656	32,626	9,277	8,705	17,982	25,247	25,361	50,608
RAICHUR	9,833	6,763	16,596	6,604	4,552	11,156	16,437	11,315	27,752
RAMANAGARA	5,846	5,656	11,502	634	470	1,104	6,480	6,126	12,606
SHIMOGA	8,687	8,835	17,522	1,952	2,020	3,972	10,639	10,855	21,494
TUMKUR	17,391	15,167	32,558	6,832	6,311	13,143	24,223	21,478	45,701
UDUPI	2,208	2,308	4,516	1,614	1,586	3,200	3,822	3,894	7,716
UTTARA KANNADA	3,598	3,425	7,023	876	1,019	1,895	4,474	4,444	8,918
YADAGIRI	5,567	2,896	8,463	2,219	1,434	3,653	7,786	4,330	12,116
Total	308,018	274,584	582,602	114,875	102,556	217,431	422,893	377,140	800,033

3.6. Gross Enrolment Ratio [GER]:

The State Gross Enrolment Ratio at the Secondary Level in the year 2011-12 [GER] is 85.65, whereas the SC GER is 70.71, ST GER is 71.37. BANGALORE URBAN & MYSORE District show the highest GER as 184.71, 134.01. Which is higher than the State GER. Raichur District shows the lowest GER as 56.69.

Table-3.6

Year	All community			SC			ST		
	Boys	Girls	Total	B	G	T	B	G	T
2012-13	84.23	84.86	84.54	71.18	71.13	71.16	67.70	66.02	66.92
2011-12	85.20	86.13	85.65	70.45	70.99	70.71	72.81	69.79	71.37
2010-11	80.90	81.99	81.42	68.51	69.74	69.09	68.69	66.76	67.77
2009-10	75.14	75.46	75.29	67.05	66.51	66.80	63.99	59.94	62.07
2008-09	72.15	67.39	69.77	64.23	62.15	63.24	61.85	57.86	59.95
2007-08	67.43	62.57	65.00						
2006-07	65.22	58.78	62.00						

Table-3.7
District wise GER in Class 9 &10 standard-2012-13

S. No.	Block Name	GER								
		All community			SC			ST		
		B	G	T	B	G	T	B	G	T
1	BAGALKOT	74.41	67.14	70.90	63.90	55.29	59.89	64.82	48.30	56.77
2	BANGALORE RURAL	78.00	76.84	77.44	72.57	70.00	71.32	82.15	70.72	76.68
3	BANGALORE URBAN	185.77	193.93	189.80	127.29	132.75	130.04	103.25	126.20	114.50
4	BELGAUM	78.74	75.67	77.27	65.19	61.57	63.47	58.69	49.61	54.38
5	BELLARY	106.87	94.82	101.09	85.79	70.53	78.60	98.77	86.77	93.20
6	BIDAR	61.45	64.48	62.93	51.30	55.44	53.26	61.59	62.14	61.86
7	BIJAPUR	69.63	61.24	65.69	57.75	50.02	54.28	94.79	72.05	84.35
8	CHAMARAJANAGARA	78.98	84.26	81.48	81.99	91.18	86.26	67.98	70.59	69.35
9	CHIKKABALLAPURA	75.86	75.18	75.53	70.77	69.39	70.09	70.23	73.22	71.56
10	CHIKKAMANGALORE	88.07	91.27	89.61	74.62	81.91	78.13	77.56	88.46	82.82
11	CHITRADURGA	76.97	77.89	77.42	70.76	68.58	69.69	71.95	69.67	70.84
12	DAKSHINA KANNADA	89.63	93.03	91.26	67.55	78.19	72.76	85.97	77.76	81.65
13	DAVANAGERE	88.01	88.67	88.34	77.79	74.83	76.35	80.38	78.58	79.50
14	DHARWAD	78.65	77.98	78.33	53.41	51.14	52.33	60.97	50.54	55.82
15	GADAG	75.78	77.39	76.61	49.67	45.49	47.71	60.76	68.39	64.23
16	GULBARGA	69.41	69.51	69.45	61.95	55.16	58.83	54.64	55.60	55.12
17	HASSAN	93.23	102.73	97.79	81.94	95.20	88.04	74.64	64.64	69.64
18	HAVERI	72.02	74.91	73.44	63.24	59.48	61.43	69.03	77.41	73.13
19	KODAGU	94.62	106.05	100.02	75.82	97.38	85.88	57.46	71.10	63.60
20	KOLAR	74.25	75.69	74.96	75.20	73.32	74.27	60.49	61.04	60.76
21	KOPPAL	55.49	53.37	54.49	46.48	42.73	44.80	50.11	46.33	48.30
22	MANDYA	80.53	83.87	82.12	76.15	75.99	76.02	56.08	44.66	50.83
23	MYSORE	135.07	139.83	137.37	111.66	121.06	116.25	104.86	111.45	108.01
24	RAICHUR	41.75	39.23	40.57	38.19	32.17	35.45	32.71	26.73	30.01
25	RAMANAGARA	86.33	89.68	87.96	86.79	86.62	86.68	76.02	59.95	68.40
26	SHIMOGA	80.13	81.72	80.89	68.17	70.88	69.45	79.41	80.67	79.98
27	TUMKUR	86.55	84.82	85.73	82.95	78.91	81.02	76.63	75.91	76.30
28	UDUPI	94.23	96.22	95.20	76.61	84.73	80.61	80.14	84.54	82.22
29	UTTARA KANNADA	77.06	80.27	78.61	65.60	68.99	67.27	56.96	66.67	61.92
30	YADAGIRI	42.96	37.71	40.58	41.42	32.68	37.78	45.51	39.35	42.42
District Total		84.23	84.86	84.54	71.18	71.13	71.16	67.70	66.02	66.92

3.8 Net Enrolment Ratio [NER]:

Sl.No.	Year	All community		
		Boys	Girls	Total
1	2012-13	69.17	69.44	69.30
2	2011-12	65.58	65.97	65.76
3	2010-11	58.39	58.55	58.47
4	2009-10	44.51	45.69	45.07
5	2008-09	38.77	39.33	39.03
6	2007-08			
7	2006-07			

District wise NER in Class 9 &10 standard Table-3.9

Sl. No.	District	2012-13		
		All community		
		B	G	T
1	BAGALKOT	50.25	44.25	47.35
2	BANGALORE RURAL	64.00	61.47	62.79
3	BANGALORE URBAN	167.49	174.63	171.02
4	BELGAUM	66.72	63.34	65.11
5	BELLARY	79.80	68.46	74.35
6	BIDAR	39.27	39.66	39.47
7	BIJAPUR	55.80	49.01	52.61
8	CHAMARAJANAGARA	76.54	80.56	78.44
9	CHIKKABALLAPURA	73.29	73.05	73.17
10	CHIKKAMANGALORE	84.40	87.54	85.91
11	CHITRADURGA	54.61	54.83	54.72
12	DAKSHINA	79.95	84.75	82.26
13	DAVANAGERE	55.89	55.37	55.64
14	DHARWAD	58.80	58.02	58.42
15	GADAG	53.56	54.40	54.00
16	GULBARGA	61.00	61.16	61.07
17	HASSAN	61.43	66.66	63.94
18	HAVERI	50.62	53.25	51.91
19	KODAGU	89.75	101.73	95.41
20	KOLAR	71.22	72.21	71.71
21	KOPPAL	39.10	36.66	37.95
22	MANDYA	79.27	82.57	80.85
23	MYSORE	92.19	94.31	93.21
24	RAICHUR	38.40	35.42	37.01
25	RAMANAGARA	83.63	87.29	85.41
26	SHIMOGA	75.03	76.34	75.65
27	TUMKUR	61.98	58.98	60.56
28	UDUPI	73.25	74.98	74.10
29	UTTARA KANNADA	65.75	69.78	67.70
30	YADAGIRI	35.24	31.20	33.41
Total		69.17	69.44	69.30

Table-3.10

Dropout Rate Secondary (Class 8 To 9) level 2012-13

2012-13										
Sl.No.	District	All			SC			ST		
		Boys	Girls	Total	Boys	Girls	Total	Boys	Girls	Total
1	BAGALKOT	7.25	9.60	8.36	3.87	5.18	4.50	9.22	10.56	9.88
2	BANGALORE RURAL	7.68	10.75	9.17	0.08	0.00	0.00	16.56	16.15	16.37
3	BANGALORE U	6.70	6.01	6.36	0.00	0.00	0.00	0.00	0.00	0.00
4	BELGAUM	7.80	9.70	8.69	0.00	0.16	0.00	7.90	10.34	9.09
5	BELLARY	10.66	12.87	11.68	3.78	4.76	4.25	7.28	6.60	6.95
6	BIDAR	13.60	15.76	14.68	4.55	5.08	4.80	11.20	8.90	10.10
7	BIJAPUR	9.36	12.93	10.98	6.67	6.41	6.55	4.85	4.44	4.66
8	CHAMARAJANAGARA	8.99	9.04	9.01	0.03	1.51	0.75	1.98	3.99	2.97
9	CHIKKABALLAPURA	8.53	7.90	8.23	3.44	3.03	3.24	7.35	7.66	7.50
10	CHIKKAMANGALORE	5.78	4.54	5.18	0.68	1.29	0.98	12.64	12.45	12.54
11	CHITRADURGA	7.11	5.90	6.52	2.39	3.03	2.70	6.49	5.73	6.13
12	DAKSHINA	3.49	0.83	2.23	0.00	0.00	0.00	4.55	4.92	4.73
13	DAVANAGERE	5.59	3.75	4.71	1.79	2.69	2.23	8.96	9.44	9.20
14	DHARWAD	12.94	13.08	13.01	2.26	3.92	3.06	14.92	13.99	14.47
15	GADAG	11.33	6.48	8.99	9.76	9.46	9.62	10.32	12.44	11.34
16	GULBARGA	15.28	15.60	15.43	3.41	7.02	5.11	39.06	37.17	38.18
17	HASSAN	4.80	2.06	3.46	1.78	1.73	1.76	12.58	14.53	13.55
18	HAVERI	10.89	11.07	10.98	2.29	1.78	2.04	8.07	8.34	8.20
19	KODAGU	3.60	2.81	3.22	0.00	0.00	0.00	11.61	11.60	11.60
20	KOLAR	5.88	3.15	4.55	2.50	3.19	2.84	12.16	12.55	12.35
21	KOPPAL	18.37	15.35	16.99	4.56	6.79	5.62	9.11	8.72	8.92
22	MANDYA	2.56	1.26	1.94	1.95	2.95	2.44	25.52	26.79	26.12
23	MYSORE	6.11	5.03	5.58	0.95	1.01	0.98	6.02	5.37	5.70
24	RAICHUR	11.96	10.54	11.33	4.49	5.89	5.16	6.77	8.74	7.71
25	RAMANAGARA	4.40	3.74	4.08	0.00	1.76	0.86	12.12	16.51	14.30
26	SHIMOGA	7.24	4.76	6.05	1.50	2.13	1.81	14.96	15.62	15.29
27	TUMKUR	4.56	3.68	4.15	0.92	1.36	1.13	5.55	8.33	6.90
28	UDUPI	2.80	1.09	1.99	0.48	0.83	0.65	1.97	4.27	3.09
29	UTTARA KANNADA	6.19	3.57	4.93	0.47	2.94	1.64	5.34	3.58	4.51
30	YADAGIRI	20.22	17.58	19.12	7.93	9.61	8.70	12.19	11.81	12.01
	Total	8.19	7.67	7.95	2.30	2.97	2.62	8.66	8.93	8.79

Table-3.11

Dropout Rate Secondary (Class 9 To 10) level 2012-13

2012-13										
Sl.No.	District	All			SC			ST		
		Boys	Girls	Total	Boys	Girls	Total	Boys	Girls	Total
1	BAGALKOT	10.38	12.37	11.30	8.45	13.65	10.89	13.61	15.38	14.45
2	BANGALORE RURAL	12.35	17.09	14.60	5.56	6.63	6.08	4.93	15.91	10.19
3	BANGALORE U	11.25	8.45	9.87	0.00	0.00	0.00	0.50	0.00	0.00
4	BELGAUM	11.25	11.09	11.18	4.24	6.77	5.46	12.77	20.36	16.38
5	BELLARY	9.72	8.40	9.13	8.10	11.10	9.45	11.90	13.40	12.59
6	BIDAR	12.79	11.18	11.99	10.54	9.51	10.05	15.43	15.03	15.23
7	BIJAPUR	10.20	12.15	11.06	11.45	14.94	13.00	0.00	10.99	2.99
8	CHAMARAJANAGARA	9.06	8.18	8.63	0.69	1.16	0.92	10.25	9.60	9.93
9	CHIKKABALLAPURA	12.69	12.42	12.56	2.83	4.77	3.78	9.47	10.05	9.75
10	CHIKKAMANGALORE	12.49	7.34	9.99	5.61	5.96	5.78	13.40	12.26	12.85
11	CHITRADURGA	7.83	6.97	7.41	6.06	8.58	7.29	8.17	10.53	9.32
12	DAKSHINA	12.57	4.39	8.71	5.07	2.88	4.01	7.14	7.85	7.48
13	DAVANAGERE	12.01	7.95	10.05	7.90	8.45	8.16	10.91	10.86	10.88
14	DHARWAD	11.07	9.53	10.33	6.68	9.85	8.18	16.37	24.22	20.28
15	GADAG	14.31	10.10	12.26	13.65	15.57	14.53	9.86	4.17	7.16
16	GULBARGA	11.36	9.42	10.47	8.97	13.72	11.15	42.35	47.32	44.58
17	HASSAN	7.42	3.01	5.24	4.51	4.08	4.30	20.22	18.27	19.27
18	HAVERI	14.12	10.14	12.14	7.93	9.12	8.50	9.86	11.12	10.49
19	KODAGU	12.33	6.57	9.49	3.80	2.10	2.96	22.49	19.14	20.83
20	KOLAR	8.79	7.23	8.03	3.54	5.16	4.33	14.44	17.23	15.78
21	KOPPAL	19.03	17.02	18.11	16.07	14.84	15.52	17.52	17.10	17.32
22	MANDYA	6.02	3.19	4.65	2.27	3.66	2.96	28.48	31.10	29.67
23	MYSORE	7.53	6.70	7.12	3.70	2.89	3.30	7.89	7.95	7.92
24	RAICHUR	16.71	12.97	15.05	8.35	12.29	10.08	16.69	20.88	18.52
25	RAMANAGARA	8.64	4.88	6.79	0.27	1.64	0.94	9.76	21.13	15.22
26	SHIMOGA	11.72	8.03	9.88	6.61	4.97	5.81	13.85	10.32	12.15
27	TUMKUR	6.44	5.58	6.03	1.17	2.46	1.78	7.55	8.71	8.11
28	UDUPI	10.48	5.06	7.86	4.45	3.45	3.96	2.43	4.73	3.54
29	UTTARA KANNADA	10.40	5.68	8.12	2.94	4.94	3.90	10.14	6.75	8.49
30	YADAGIRI	17.27	16.50	16.95	17.40	20.19	18.47	21.06	23.01	21.88
	Total	10.93	8.66	9.85	5.77	6.92	6.31	12.18	13.32	12.72

3.12 Transition Rate:

Table-3.12 Class VIII to IX Level in the year 2012-13

Sr. No.	Block Name	2012-13								
		All community			SC			ST		
		Boys	Girls	Total	Boys	Girls	Total	Boys	Girls	Total
1	BAGALKOT	92.39	90.23	91.37	89.03	83.16	86.39	80.77	81.79	81.23
2	BANGALORE RURAL	93.84	91.71	92.81	90.16	87.46	88.86	110.48	81.42	96.22
3	BANGALORE URBAN	97.53	98.08	97.80	102.22	102.69	102.45	93.08	111.74	102.18
4	BELGAUM	92.22	90.36	91.35	91.23	88.71	90.06	85.72	76.58	81.62
5	BELLARY	89.76	86.99	88.48	86.63	85.61	86.20	82.78	78.66	80.94
6	BIDAR	86.30	83.93	85.11	86.72	85.98	86.36	84.36	81.71	83.04
7	BIJAPUR	90.59	86.96	88.94	86.85	82.51	84.96	98.63	87.68	93.93
8	CHAMARAJANAGARA	90.48	90.67	90.57	96.74	97.49	97.10	83.45	85.56	84.46
9	CHIKKABALLAPURA	92.01	92.01	92.01	94.73	92.09	93.42	86.82	91.07	88.80
10	CHIKKAMANGALORE	95.12	96.62	95.84	89.58	92.63	91.09	84.98	86.41	85.70
11	CHITRADURGA	93.10	94.19	93.62	90.93	86.96	89.02	87.27	87.83	87.54
12	DAKSHINA	103.02	101.87	102.47	93.84	100.98	97.33	95.86	92.12	94.09
13	DAVANAGERE	94.57	96.70	95.60	88.85	91.34	89.99	91.07	91.07	91.07
14	DHARWAD	87.50	86.52	87.03	87.43	82.30	85.02	79.02	70.99	74.99
15	GADAG	88.74	92.66	90.63	79.51	82.09	80.65	87.81	92.11	89.75
16	GULBARGA	84.44	84.16	84.31	87.74	83.93	86.04	56.66	52.93	55.04
17	HASSAN	95.75	97.87	96.79	90.73	93.67	92.13	68.89	72.22	70.47
18	HAVERI	89.45	89.24	89.35	83.06	85.11	84.03	83.21	81.77	82.49
19	KODAGU	99.19	99.02	99.11	94.55	96.87	95.70	80.37	81.30	80.83
20	KOLAR	95.44	97.28	96.33	96.52	96.62	96.57	79.22	79.77	79.47
21	KOPPAL	82.20	85.30	83.62	79.22	81.55	80.19	77.74	79.97	78.74
22	MANDYA	97.34	98.79	98.03	95.67	95.69	95.68	66.67	67.07	66.84
23	MYSORE	93.72	95.15	94.42	89.73	93.46	91.60	87.54	90.12	88.75
24	RAICHUR	87.89	89.36	88.54	90.50	88.97	89.87	80.07	78.06	79.26
25	RAMANAGARA	95.60	96.26	95.92	97.98	97.33	97.67	83.66	79.07	81.55
26	SHIMOGA	93.37	95.43	94.35	89.04	93.01	90.94	90.75	94.72	92.59
27	TUMKUR	95.16	96.07	95.58	95.47	96.33	95.88	84.93	85.60	85.25
28	UDUPI	100.20	100.26	100.23	98.05	95.27	96.69	90.24	90.28	90.26
29	UTTARA KANNADA	94.35	96.71	95.48	94.78	95.75	95.24	90.46	93.54	92.03
30	YADAGIRI	80.69	83.36	81.80	82.57	83.32	82.82	72.96	86.61	77.93
Total		93	92.83	93.10	91.46	91.46	91.64	84.64	84.64	84.63

Source: UDISE 201-13

The State Transition Rate at the Class VIII to IX Level in the year 2012-13 is 84.63

3.13 Transition Rate:

Table-3.13 Class IX to X Level in the year 2012-13

Sl. No.	District Name	2012-13								
		All community			SC			ST		
		B	G	T	B	G	T	B	G	T
1	BAGALKOT	93.54	89.60	91.70	86.92	86.10	86.57	93.01	76.15	85.30
2	BANGALORE RURAL	91.76	87.16	89.55	89.39	93.29	91.24	68.97	87.62	76.71
3	BANGALORE URBAN	90.06	93.58	91.79	87.24	92.86	89.99	86.03	95.28	90.96
4	BELGAUM	92.47	93.69	93.03	87.03	88.89	87.88	78.57	83.88	80.80
5	BELLARY	89.20	88.43	88.85	86.65	89.49	87.83	87.02	81.01	84.41
6	BIDAR	90.24	91.04	90.64	89.55	85.69	87.71	82.77	83.68	83.22
7	BIJAPUR	94.52	91.66	93.25	92.46	86.94	90.13	91.41	84.30	88.56
8	CHAMARAJANAGARA	90.99	94.75	92.80	88.28	94.35	91.23	90.16	92.18	91.13
9	CHIKKABALLAPURA	91.28	91.29	91.28	84.00	86.90	85.41	81.31	80.06	80.72
10	CHIKKAMANGALORE	87.73	92.72	90.16	85.76	85.82	85.79	83.29	88.97	86.17
11	CHITRADURGA	96.61	97.09	96.84	94.82	101.03	97.73	92.32	92.27	92.30
12	DAKSHINA	84.81	97.81	90.96	71.20	85.38	78.39	75.17	103.55	88.33
13	DAVANAGERE	92.57	96.15	94.31	88.62	94.05	91.15	92.69	94.98	93.83
14	DHARWAD	91.77	94.31	92.99	94.05	99.37	96.48	88.06	96.28	91.97
15	GADAG	94.60	97.42	95.99	87.83	82.06	85.22	86.31	97.36	91.44
16	GULBARGA	95.85	95.10	95.50	91.51	88.76	90.31	92.90	96.95	94.59
17	HASSAN	92.72	98.63	95.64	88.86	95.43	92.05	87.50	95.30	91.29
18	HAVERI	84.00	89.85	86.89	81.25	74.97	78.24	89.86	96.58	93.22
19	KODAGU	82.32	92.60	87.32	78.11	91.04	84.60	69.38	76.04	72.74
20	KOLAR	92.51	94.55	93.51	92.65	89.17	90.94	86.32	97.22	91.36
21	KOPPAL	86.88	87.56	87.20	80.53	79.08	79.91	79.58	82.43	80.88
22	MANDYA	99.51	104.69	102.00	100.27	106.11	103.13	85.27	90.42	87.47
23	MYSORE	89.81	92.72	91.24	91.97	91.15	91.55	83.29	87.92	85.50
24	RAICHUR	86.33	89.20	87.62	85.05	84.06	84.64	74.79	81.18	77.33
25	RAMANAGARA	94.70	100.07	97.32	88.10	104.11	95.65	87.57	72.79	80.98
26	SHIMOGA	83.74	94.55	88.98	73.55	85.90	79.57	68.57	95.00	81.07
27	TUMKUR	96.25	98.11	97.12	97.35	92.54	95.08	96.21	90.41	93.38
28	UDUPI	91.00	101.77	96.13	68.81	91.06	79.49	81.76	89.71	85.61
29	UTTARA KANNADA	89.40	93.64	91.47	77.17	85.59	81.18	71.09	85.45	78.53
30	YADAGIRI	88.70	85.78	87.47	77.49	80.71	78.59	88.83	81.05	85.69
Total		91.12	94.07	92.53	88.06	90.52	89.21	84.76	88.39	86.46

Source UDISE2012-13

The State Transition Rate at the Class IX to X Level in the year 2011-12 is 86.46

Gender Parity Index (GPI) & Gender gap

Gender parity in high and higher secondary itself does not say that all is well with girls' education, since only a select group manages to reach the high and higher levels of schooling. A number of encouraging strategies such as exclusive girls' schools, appointment of women teachers in girls' schools, scholarships and incentives will be provided to sustain the current number of girl students particularly from the SC-ST community and to improve their enrolments in the future to achieve Universalisation of Secondary Education. Importantly, girls share a much higher proportion of enrolments in Government schools than aided or private schools, and positive reinforcements will be extended from the Government to sustain this positive trend. The State GPI in the year 2012-13 is 1.01

Table-3.14

Sl. No.	District Name	Enrolment 2011-12			GPI
		Boys	Girls	Total	
1	BAGALKOT	27802	23840	51642	0.90
2	BANGALORE RURAL	13469	11968	25437	0.99
3	BANGALORE URBAN	117258	115335	232593	1.04
4	BELGAUM	75739	65759	141498	0.96
5	BELLARY	31863	26345	58208	0.89
6	BIDAR	25057	24566	49623	1.05
7	BIJAPUR	34533	27074	61607	0.88
8	CHAMRAJNAGAR	12653	12049	24702	1.07
9	CHIKBALLAPUR	18684	17547	36231	0.99
10	CHIKKAMANGALORE	17035	16516	33551	1.04
11	CHITRADURGA	24904	23428	48332	1.01
12	DAKSHINA	34814	33448	68262	1.04
13	DAVANGERE	28080	27087	55167	1.01
14	DHARWAD	27924	26274	54198	0.99
15	GADAG	15070	14925	29995	1.02
16	GULBARGA	36206	31711	67917	1.00
17	HASSAN	25853	26082	51935	1.10
18	HAVERI	21604	21747	43351	1.04
19	KODAGU	8744	8742	17486	1.12
20	KOLAR	22728	22122	44850	1.02
21	KOPPAL	17406	15314	32720	0.96
22	MANDYA	25407	24229	49636	1.04
23	MYSORE	43619	42424	86043	1.04
24	RAICHUR	23051	18928	41979	0.94
25	RAMNAGARA	14918	14615	29533	1.04
26	SHIMOGA	26029	25864	51893	1.02
27	TUMKUR	42873	38068	80941	0.98
28	UDUPI	17291	16654	33945	1.02
29	UTTARA KANNADA	21811	21267	43078	1.04
30	YADGIRI	11628	8403	20031	0.88
Total		864053	802331	1666384	1.01

3.15. Student Classroom Ratio (SCR)

The enrolment and retention of students in Karnataka is high. There is, however, a great difference in the Student Classroom Ratio. While Hassan has 42 students in a class, Belagum District has 136 of them in a class. This shows a State-wide shortfall of classrooms in certain Districts. As the Transition Rate from Elementary to Secondary is very high and almost at zero leak, the immediate need is enough number of classrooms. The Transition Rate has rapidly increased over the last three years. And, in certain pockets of the State, new schools need to be incepted to make them accessible to the children of marginalized sections of the society. In a way, dearth of classrooms and lack of new schools affects the progress in more than one way. The students who have to trudge miles to reach a secondary school find it difficult to keep themselves under the purview of secondary school education due to many social barriers. Moreover, even in the case of students who access secondary schools within their habitations, classrooms are found overcrowded and the facilities insufficient.

Table3.15 TCR, RCR and Enrolment per school in All Schools

Sl. No.	District	ALL Schools				Percentages		
		Schools	Teachers	Class	Enrolment	Enrolment	TCR	PCR
1	BAGALKOT	399	3378	1800	51642	129	15.00	29.00
2	BANGALORE RURAL	211	1542	981	25601	121	17.00	26.00
3	BANGALORE URBAN	2125	5919	5508	232593	109	39.00	42.00
4	BELGAUM	949	4030	4936	141498	149	35.00	29.00
5	BELLARY	473	3684	2019	58208	123	16.00	29.00
6	BIDAR	478	3929	1957	49623	104	13.00	25.00
7	BIJAPUR	486	3954	2069	61607	127	16.00	30.00
8	CHAMARAJANAGARA	204	1760	891	24702	121	14.00	28.00
9	CHIKKABALLAPURA	270	1806	1720	36231	134	20.00	21.00
10	CHIKKAMANGALORE	328	2775	1321	33551	102	12.00	25.00
11	CHITRADURGA	418	3459	1795	48332	116	14.00	27.00
12	DAKSHINA KANNADA	516	4633	3177	68262	132	15.00	21.00
13	DAVANAGERE	496	4435	2504	55167	111	12.00	22.00
14	DHARWAD	386	3142	3130	54198	140	17.00	17.00
15	GADAG	282	2249	1360	29995	106	13.00	22.00
16	GULBARGA	696	5318	3032	67917	98	13.00	22.00
17	HASSAN	534	4501	2152	51935	97	12.00	24.00
18	HAVERI	389	2896	1685	43351	111	15.00	26.00
19	KODAGU	173	1438	851	17486	101	12.00	21.00
20	KOLAR	323	2813	1526	44850	139	16.00	29.00
21	KOPPAL	266	1792	1149	32720	123	18.00	28.00
22	MANDYA	438	3675	1972	49636	113	14.00	25.00
23	MYSORE	647	5254	3121	85989	133	16.00	28.00
24	RAICHUR	389	2912	1873	41979	108	14.00	22.00
25	RAMANAGARA	277	2225	1332	29533	107	13.00	22.00
26	SHIMOGA	456	3819	2078	51893	114	14.00	25.00
27	TUMKUR	746	4160	3324	80941	109	19.00	24.00
28	UDUPI	282	2598	1730	33945	120	13.00	20.00
29	UTTARA KANNADA	357	1568	1603	43078	121	27.00	27.00
30	YADAGIRI	200	1606	961	20031	100	12.00	21.00
Total		14,194	97,270	63,557	1666494	117	17.00	26.00

Table-3.16**TCR, RCR and Enrolment per school in Education Department Schools**

Sl. No.	District	Govt Schools				Percentages		
		Schools	Teacher	Class	Enrolme	Enrolme	TC	PCR
1	BAGALKOT	157	1453	763	21962	140	15.0	29.0
2	BANGALORE RURAL	63	724	462	11318	180	16.0	24.0
3	BANGALORE URBAN	134	510	1008	26740	200	52.0	27.0
4	BELGAUM	284	1122	1377	42231	149	38.0	31.0
5	BELLARY	161	1530	789	26474	164	17.0	34.0
6	BIDAR	156	1575	711	18698	120	12.0	26.0
7	BIJAPUR	137	1216	601	17257	126	14.0	29.0
8	CHAMARAJANAGAR	82	832	411	12051	147	14.0	29.0
9	CHIKKABALLAPURA	107	1043	757	19607	183	19.0	26.0
10	CHIKKAMANGALOR	116	1183	613	14487	125	12.0	24.0
11	CHITRADURGA	111	1122	513	15333	138	14.0	30.0
12	DAKSHINA	161	1631	905	23193	144	14.0	26.0
13	DAVANAGERE	156	1563	880	20905	134	13.0	24.0
14	DHARWAD	101	909	828	13429	133	15.0	16.0
15	GADAG	108	900	552	11576	107	13.0	21.0
16	GULBARGA	263	2455	1295	32578	124	13.0	25.0
17	HASSAN	240	2286	1006	25189	105	11.0	25.0
18	HAVERI	136	1205	640	15629	115	13.0	24.0
19	KODAGU	47	507	262	5564	118	11.0	21.0
20	KOLAR	120	1284	687	21394	178	17.0	31.0
21	KOPPAL	143	1305	779	22138	155	17.0	28.0
22	MANDYA	213	1943	1073	25534	120	13.0	24.0
23	MYSORE	223	2105	1314	37303	167	18.0	28.0
24	RAICHUR	105	1704	1054	24801	236	15.0	24.0
25	RAMANAGARA	181	1016	548	12091	67	12.0	22.0
26	SHIMOGA	163	1693	803	23274	143	14.0	29.0
27	TUMKUR	227	1335	1131	27411	121	21.0	24.0
28	UDUPI	106	1096	702	14238	134	13.0	20.0
29	UTTARA KANNADA	122	480	643	16098	132	34.0	25.0
30	YADAGIRI	119	1113	604	13974	117	13.0	23.0
Total		4,442	38,840	16,47	612477	138	16	37

3.19. Structure and Administration of Secondary Education

Table No: 3.19 Schools by Funding

Sr. No.	District	Total No. of Secondary Schools	State Govt Secondary Schools	Local Body and Social Welfare Dept.	Central Govt school	Sec Aided Secondary School	Pvt. Un Aided Secondary School
1	BAGALKOT	391	157	18	2	109	105
2	BANGALORE RURAL	219	63	4	1	37	114
3	BANGALORE URBAN	2095	134	36	9	265	1651
4	BELGAUM	915	284	27	3	316	285
5	BELLARY	449	161	21	3	80	184
6	BIDAR	431	156	13	0	93	169
7	BIJAPUR	450	137	10	3	183	117
8	CHAMARAJANAGARA	198	82	10	0	37	69
9	CHIKKABALLAPURA	283	107	12	1	32	131
10	CHIKKAMANGALORE	333	116	19	2	114	82
11	CHITRADURGA	401	111	13	1	190	86
12	DAKSHINA KANNADA	493	161	12	3	107	210
13	DAVANAGERE	498	155	15	1	173	154
14	DHARWAD	377	101	15	5	125	131
15	GADAG	276	108	10	1	82	75
16	GULBARGA	637	265	14	1	91	266
17	HASSAN	537	240	26	2	127	142
18	HAVERI	368	136	16	0	137	79
19	KODAGU	173	47	6	3	48	68
20	KOLAR	316	119	12	2	44	139
21	KOPPAL	261	143	12	1	26	79
22	MANDYA	446	213	25	1	69	138
23	MYSORE	630	223	19	8	97	283
24	RAICHUR	393	181	87	2	26	95
25	RAMANAGARA	274	105	18	0	58	93
26	SHIMOGA	443	163	14	1	132	133
27	TUMKUR	730	227	22	2	296	183
28	UDUPI	281	106	5	1	70	99
29	UTTARA KANNADA	354	122	12	4	141	75
30	YADAGIRI	182	119	11	1	10	43
Total		13834	4442	534	64	3315	5478

Source: UDISE 2012-13

3.20 MANAGEMENT OF SECONDARY EDUCATION IN KARNATAKA

The management of Secondary education in Karnataka is being done at 4 level.

Namely State level, Divisional level, District level, Block level.

1 Management of Secondary education at state level.: Minister for primary and secondary education is the state head of the primary and secondary education. He is assisted by the secretary for primary and secondary education. Who is a senior I.A.S officer. The secretary is responsible for policy formation, planning programming, budgeting of primary and secondary education, co-ordination among different directorates and with the departments. Promotion and transfer of senior officers of primary and secondary education. Besides administrative powers, the primary and secondary education, secretary enjoys full financial powers such as sanctioning of various schemes and projects.

The management structure at the state level as follows

MINISTER FOR PRIMARY AND SECONDARY EDUCATION



SECRETARY FOR PRIMARY AND SECONDARY EDUCATION



DEPUTY SECRETARY



UNDER SECRETARY

2 Management of Secondary education at Directorate level:

Next to Secretariat commissioner for public instruction is functioning to implement the policies and programmes of the department of public instruction into active. Earlier there was only one commissioner for public instruction at state level, now there are 2 Additional commissioner's additional for Belagum and Gulberga division, in order to give more attention to educational most backward regions.

The Commissioner for Public Instructions the head of the department of public instructions, having control over all the 10 Directorates of Public Instructions. He acts as chief co-ordinator for 10 D.P.I's holding different responsibilities each enjoying the status of a head of the departments.

These departments are 1.Primary Education, 2.Secondary Education 3.D.S.E.R.T
4.Urdu and Minority language school 5.Karnataka Secondary Education Examination
Board. 6. Karnataka Secondary Education Examination Board.(other exams) 7.S.S.A
8.Text books 9.Director(Gulberga) 10. Director(Belagum)

The Directors in his/her capacity exercise over-all financial administrative and supervisory power in respect of matters he/she is competent to deal with as per rules.

He/she assisted by number of other senior level officer like Joint Director at Divisional level etc

3.Management of Secondary education at district level:

The district is the most important unit of educational administrator in Karnataka. The Deputy Director of Public Instructions is the over all in charge of the primary as well as the secondary education .Education up to secondary level(1to 10th class) is also managed by the Panchayath Raj Institutions in Karnataka. In every Zilla Panchayath there is a committee for Health and Education. this committee supervise and implementation of policies and programmes of primary and secondary education at the District level.

D.D.P.I is having academic and administrative duties and also he serves as selection authority for Government primary school teacher and appointing authority for Government High school teachers as per C.R .rules

4. Management of Secondary education at block level:

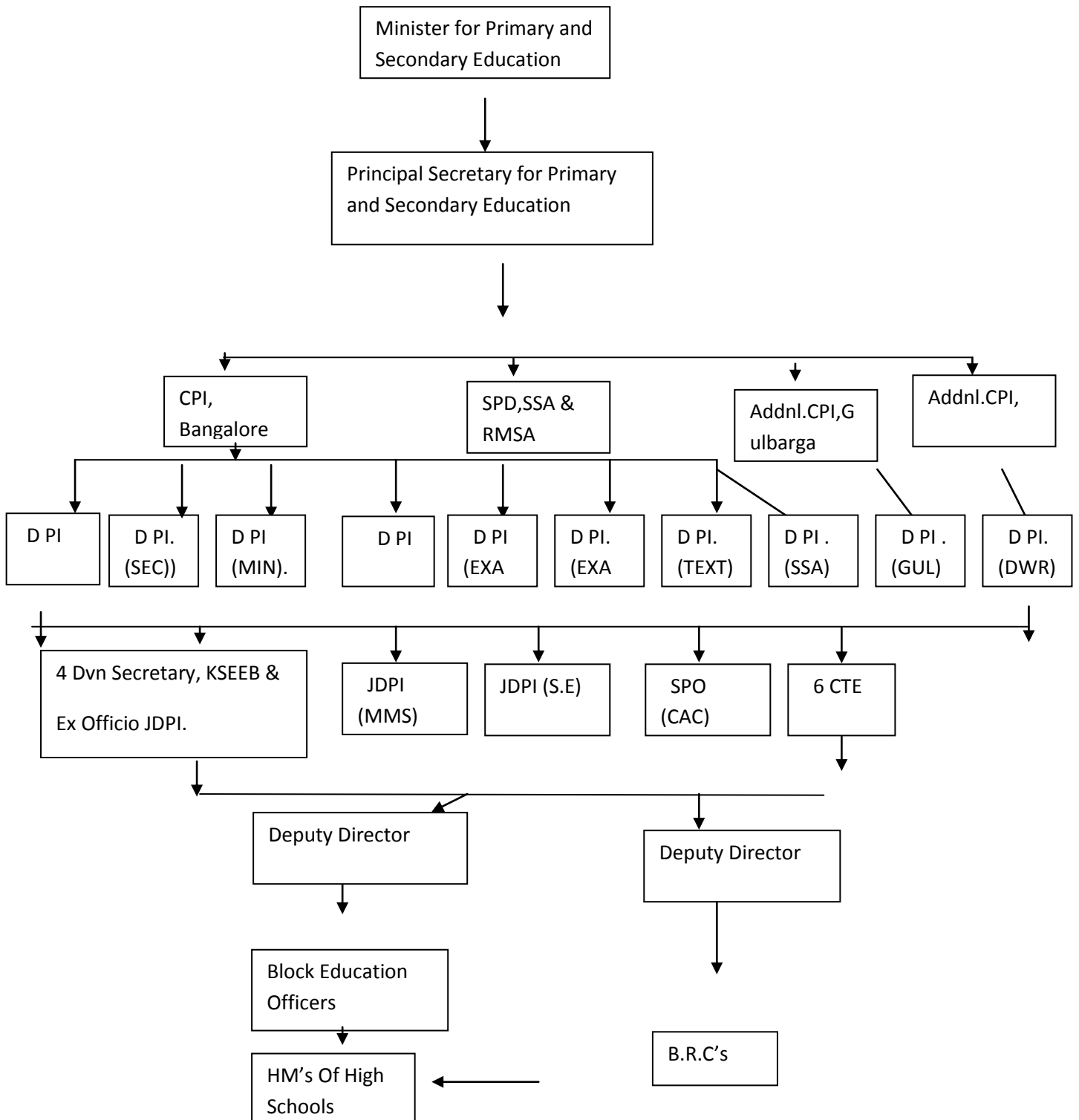
Block education officer is the administrative as well as academic head of the appointing authority to Government primary school teachers selected as per C.R. rules.

5. Management of Secondary education at Institution level:

Head of the Institution: The head of the Institution plays a key role in the survival of the school effectively. The programme of action entrusts the head of the institution with the academic leadership and improvement of performance of school. He being the key-pin plays an important role in the management and development of secondary education. head of the institution post filled through by promotion and direct recruitment .75%of the post filled by promotion.25% of the post filled by direct recruitment through Karnataka Public Service Commission.

Delegation of Power: In spite of the best efforts of the state for diversificated of sector –wise education administrative structure. There is practically lack of administrative and financial powers, particularly at the district and block level due to undue influence of Zilla panchayath and Taluk panchayath Transfer power of teacher will be delegated for a specific period to the District level officer with number of restrictions and will be withdrawn after the task is complete. Disciplinary action against the High school teachers vested with the District level officer and at higher secondary colleges' lecturers with the Director of the Public Instruction (PUC).

Organisation Chart of Department of Public Instruction



Academic Chart of Department of Public Instruction

